



elevatorarchitect
FOR AUTODESK® REVIT®

Free elevator plug-in for Autodesk® Revit® software

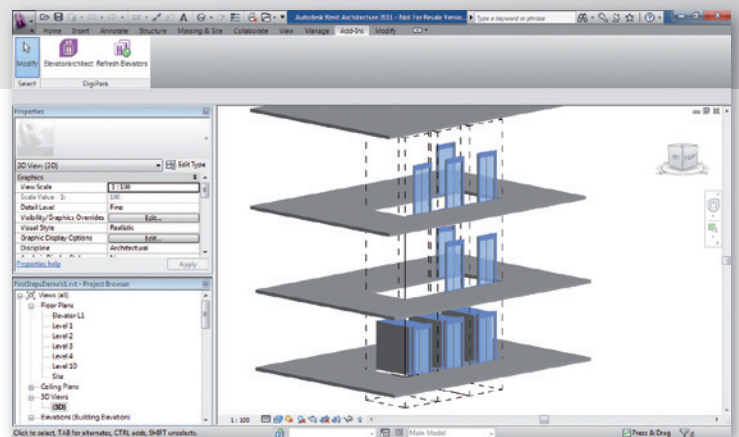
Elevatorarchitect extends Autodesk® Revit® software with a vertical transportation solution. It supports Revit® users in finding the correct size elevators and professionally guiding them to the point of reaching an optimal 3-D Revit® model.

> Create an elevator model within Autodesk® Revit® software

Elevatorarchitect provides free optimized families to easily create elevator models inside Autodesk® Revit® software. Start the plug-in directly inside Revit® and find the correct size and number of required elevators within seconds.

> A reliable guide for elevator systems

Standardize the elevator design process: How many elevators are required? Will all the main manufacturers fit into the shaft? Elevatorarchitect suggests the number of required elevators, based on simple easy to use traffic analysis. Even complex elevator groups can be created with one click.



Main Features

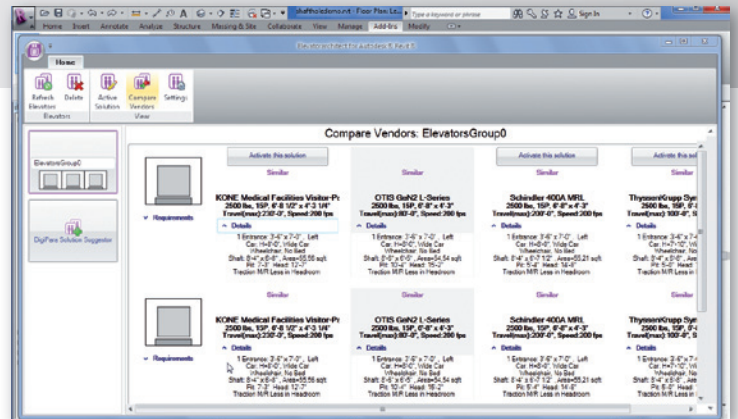


> Free Revit® families

- get free Revit® families, which support all types of elevators: hydraulic, roped-hydraulic and traction, with and without machine room
- elevators can be build into an existing shaft or the program builds the shaft for you

> Compare elevator manufacturer dimensions

- suggests the most relevant elevator solution by comparing elevator and shaft dimensions from a database of manufactures



> Revit® schedules

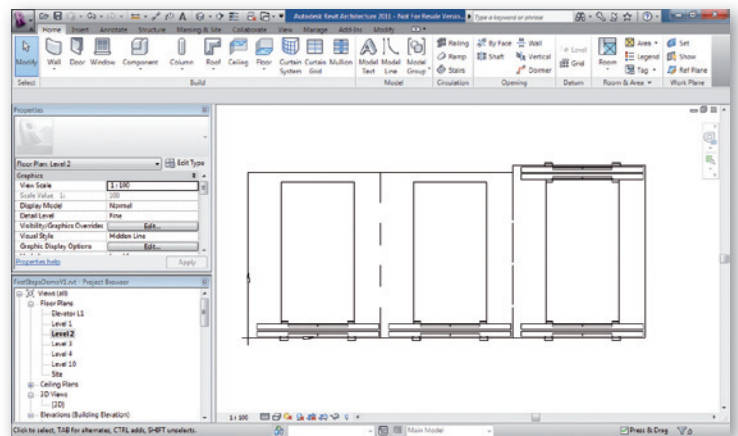
- creates fundamental elevator objects in your building and explores the key physical and functional BIM characteristics
- all elevator data is instantly illustrated in Revit® schedules

> Large manufacturer library

- includes the global, European and American series from OTIS, Schindler, Kone and ThyssenKrupp
- more than 100,000 combinations of car sizes, payloads, heights or speeds available

> Integrated update service

- always up-to-date
- linked to the Internet – users can be sure that they always have the latest elevator types and dimensions available



Autodesk and Revit are registered trademarks or trademarks of Autodesk, Inc., in the USA and/or other countries. All other brand names, product names, or trademarks belong to their respective holders.

You can find further information at <http://www.digipara.com/Elevatorarchitect.aspx>

Contact

DigiPara GmbH
Augustinusstraße 11 d
50226 Frechen
Germany

Phone: +49 (0) 2234 999 448 - 0
Email: sales@digipara.com
www.digipara.com